

## WebEOC® Quick Reference Guide

# Add NOAA nowCOAST Layers to Maps

## Overview

With *Maps Add-on*, you can configure an unlimited number of map layers. These layers allow you to control the data you see on a map, including, for example, data related to detailed weather information.

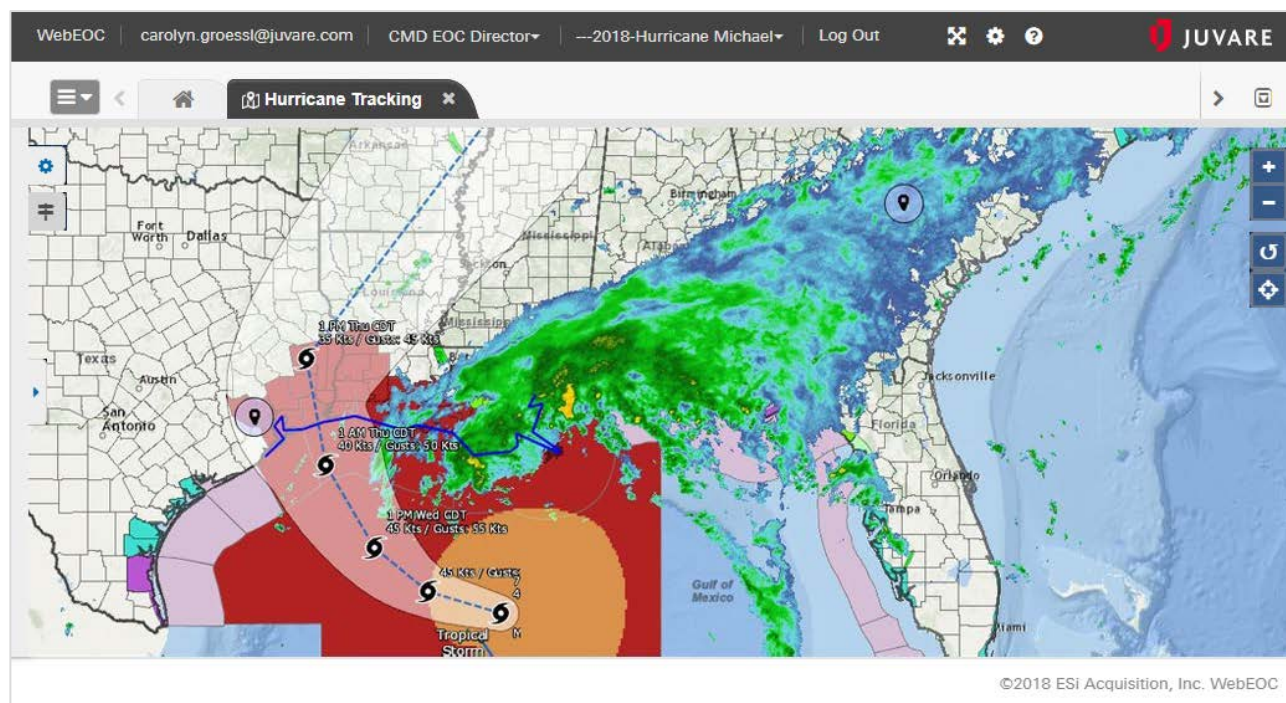
The National Oceanic and Atmospheric Administration (NOAA) provides nowCOAST, a free, robust GIS-based mapping service that provides near real-time observations, analyses, tide predictions, model guidance, watches/warnings, and forecasts for the United States. WebEOC's *Maps Add-on* allows you to easily consume nowCOAST's many map services, providing the ability to create a number of maps with comprehensive weather and oceanographic information.

This QRG reviews how to create a layer with nowCOAST data and briefly outlines the top nowCOAST map services that your organization might find most useful.

### Compatibility

Versions 8.3.0.0 and later.

Core	+	Available to add
Professional	+	Available to add
Enterprise	+	Available to add

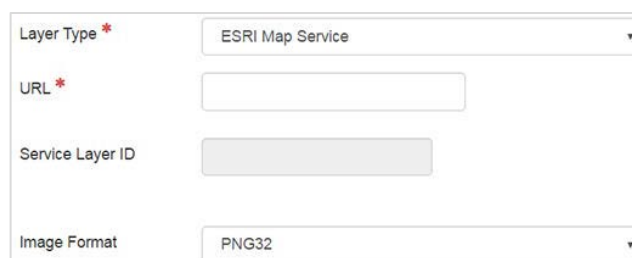


## Create a NOAA Map Layer

Creating a map layer that links to a nowCOAST map service is the same as creating a layer linked to any other service type. An example of establishing a nowCOAST-based layer follows.

### To Create a nowCOAST Map Layer

1. In the *Admin* window, go to **Mapping: Layers**. The *Map Layers* page opens.
2. Click **Create Map Layer**. The *Create Map Layer* page opens.
3. For **Name**, enter a name for this map layer.
4. For Layer Type, select Esri Map Service.
5. For URL, enter the URL of the map service, obtained from the [services directory](#) or by copying and pasting from the list below.
6. For Image Format, select PNG32.
7. Click Save.



**Tip:** The supported image format types for a given map service are also listed in the directory's description of the service.

**Note:** From this step, go directly to step 7. The information in the **Local ArcGIS** tab is not applicable and does not need to be completed.

## nowCOAST Map Services

nowCOAST was developed by NOAA/National Ocean Service's Coast Survey Development Laboratory. Hosted on NOAA's Integrated Dissemination Program infrastructure, it is continuously monitored by NWS/NCEP Central Operations.

With such an infrastructure, nowCOAST's offerings are allowed to be extensive, providing over 60 unique, publically-available map services so organizations can remain abreast of a wide range of weather, oceanographic, and hydrological data and information.

Further, nowCOAST integrates data and information from across NOAA and other federal and state agencies. Thanks to these integrations, nowCOAST includes the latest observations of winds, air and water temperatures, weather radar reflectivity, precipitation estimates, weather forecasts, and weather advisories, watches, and warnings.

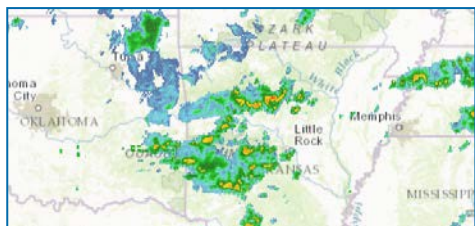
Below are the top map services, sorted by popularity. Note that a recommended short name for the map follows the official name, providing you a viable option for naming the map layer itself within WebEOC.

The full list of services can be found at <https://nowcoast.noaa.gov/help/#!section=mapservice>.

## Weather Radar Imagery

### NOAA Weather Radar Imagery

[https://nowcoast.noaa.gov/arcgis/rest/services/nowcoast/radar\\_meteo\\_imagery\\_nexrad\\_time/MapServer](https://nowcoast.noaa.gov/arcgis/rest/services/nowcoast/radar_meteo_imagery_nexrad_time/MapServer)



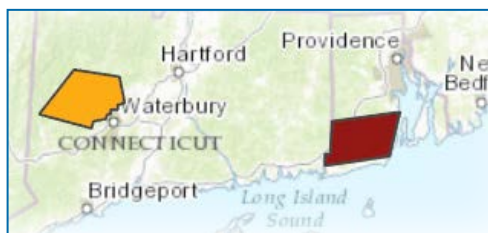
Provides maps of NWS and OAR multi-radar/multi-sensor (MRMS) mosaics of quality-corrected base reflectivity images.

*Refresh Time: 4 min*

## Short-duration Hazards in Inland, Coastal and Maritime Areas

### NOAA Short-duration Warnings

[https://nowcoast.noaa.gov/arcgis/rest/services/nowcoast/wwa\\_meteoceanhydro\\_shortduration\\_hazards\\_warnings\\_time/MapServer](https://nowcoast.noaa.gov/arcgis/rest/services/nowcoast/wwa_meteoceanhydro_shortduration_hazards_warnings_time/MapServer)



Depicts geographic coverage of the latest National Weather Service (NWS) special marine warnings and warnings for severe thunderstorms, tornadoes, and flash floods.

*Refresh Time: 1 min*

## Tropical Cyclone Track and Intensity Forecasts

### NOAA Tropical Cyclone Activity

[https://nowcoast.noaa.gov/arcgis/rest/services/nowcoast/wwa\\_meteocean\\_tropicalcyclones\\_trackintensityfcsts\\_time/MapServer](https://nowcoast.noaa.gov/arcgis/rest/services/nowcoast/wwa_meteocean_tropicalcyclones_trackintensityfcsts_time/MapServer)



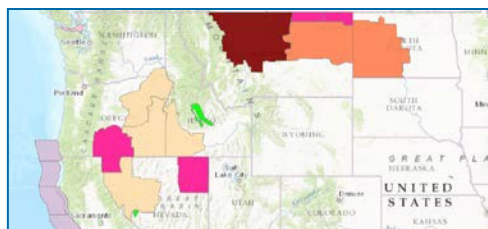
Reveals the latest official NWS tropical cyclone forecast tracks, watches, and warnings.

*Refresh Time: 5 min*

## Watches, Warnings, Advisories and Statements for Long-duration Hazards

### NOAA Long-duration Hazards

[https://nowcoast.noaa.gov/arcgis/rest/services/nowcoast/wwa\\_meteoceanhydro\\_longduration\\_hazards\\_time/MapServer](https://nowcoast.noaa.gov/arcgis/rest/services/nowcoast/wwa_meteoceanhydro_longduration_hazards_time/MapServer)



Provides the latest NWS watches, warnings, advisories, and statements for long-duration hazardous weather, marine weather, and more.

*Refresh Time: 5 min*

## Emulated GOES-R Lightning Strike Density

### NOAA Lightning Strike Density

[https://nowcoast.noaa.gov/arcgis/rest/services/nowcoast/sat\\_meteo\\_emulated\\_imagery\\_lightningstrikedensity\\_goes\\_time/MapServer](https://nowcoast.noaa.gov/arcgis/rest/services/nowcoast/sat_meteo_emulated_imagery_lightningstrikedensity_goes_time/MapServer)



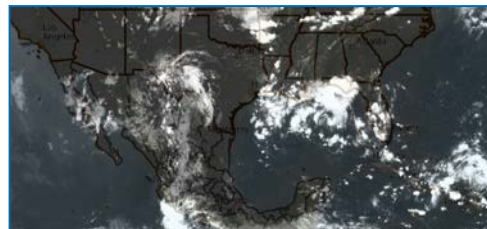
Offers lightning strike density data from NWS/NCEP/Ocean Prediction Center (OPC), emulating data from GOES-R GLM.

Refresh time: 15 min

## Geostationary Weather Satellite Imagery

### NOAA Satellite Imagery

[https://nowcoast.noaa.gov/arcgis/rest/services/nowcoast/sat\\_meteo\\_imagery\\_time/MapServer](https://nowcoast.noaa.gov/arcgis/rest/services/nowcoast/sat_meteo_imagery_time/MapServer)



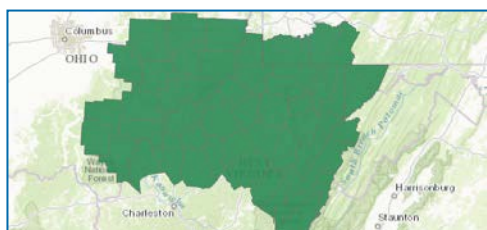
Shows visible, water vapor, shortwave infrared, and longwave infrared imagery composited from various geostationary weather satellites, including NESDIS GOES.

Refresh Time: 15 min

## Watches for Short-duration Hazards in Inland, Coastal and Maritime Areas

### NOAA Short-duration Watches

[https://nowcoast.noaa.gov/arcgis/rest/services/nowcoast/wwa\\_meteoceanhydro\\_shortduration\\_hazards\\_watches\\_time/MapServer](https://nowcoast.noaa.gov/arcgis/rest/services/nowcoast/wwa_meteoceanhydro_shortduration_hazards_watches_time/MapServer)



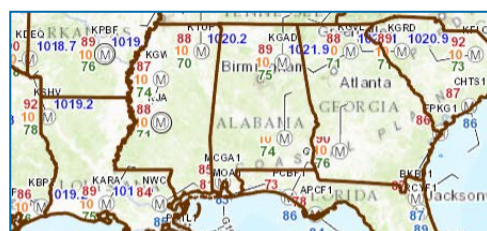
Includes coverage of NWS severe thunderstorm, tornado, and flash flood watches that may be affecting inland and coastal areas.

Refresh Time: 5 min

## Surface Weather and Ocean Observations

### NOAA Surface Weather

[https://nowcoast.noaa.gov/arcgis/rest/services/nowcoast/obs\\_meteocean\\_insitu\\_sfc\\_time/MapServer](https://nowcoast.noaa.gov/arcgis/rest/services/nowcoast/obs_meteocean_insitu_sfc_time/MapServer)



Updates with the latest surface weather and marine weather observations at observing sites using the international station model.

Refresh Time: 10 min



## Hyperlinks to Forecasts for Geographic Areas or Points

### NOAA Forecast by Zones

[https://nowcoast.noaa.gov/arcgis/rest/services/nowcoast/forecast\\_meteoceanhydro\\_pts\\_zones\\_geolinks/MapServer](https://nowcoast.noaa.gov/arcgis/rest/services/nowcoast/forecast_meteoceanhydro_pts_zones_geolinks/MapServer)



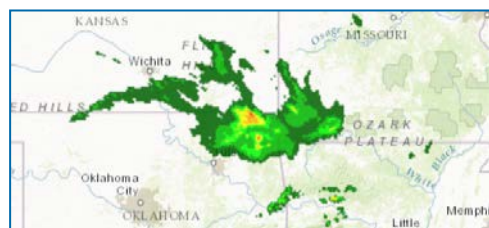
Contains links, by geographic zones or points, to air quality, ecological, river, terminal aviation, fire weather, and public weather forecasts.

*Refresh Time: Quarterly*

## Quantitative Precipitation Estimates

### NOAA Precipitation Estimates

[https://nowcoast.noaa.gov/arcgis/rest/services/nowcoast/analysis\\_meteohydro\\_sfc\\_qpe\\_time/MapServer](https://nowcoast.noaa.gov/arcgis/rest/services/nowcoast/analysis_meteohydro_sfc_qpe_time/MapServer)



Depicts NWS multi-radar multi-sensor (MRMS) quantitative radar-only precipitation estimate (QPE) mosaics for various time periods.

*Refresh Time: 5 min for 1-hr QPE, 60 min for all others*

## Real-time Mesoscale Analysis

### NOAA Surface Analysis

[https://nowcoast.noaa.gov/arcgis/rest/services/nowcoast/analysis\\_meteohydro\\_sfc\\_rtma\\_time/MapServer](https://nowcoast.noaa.gov/arcgis/rest/services/nowcoast/analysis_meteohydro_sfc_rtma_time/MapServer)



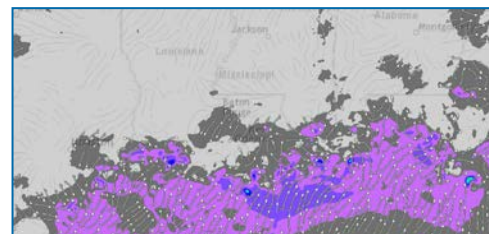
Provides maps depicting the past four hours of surface meteorological analyses of air temperature, dew point temperature, visibility, wind velocity, and more from NWS/NCEP Real-Time Mesoscale Analysis (RTMA) System.

*Refresh Time: 60 min*

## National Digital Forecast Database Gridded Forecasts

### NOAA Surface Forecasts

[https://nowcoast.noaa.gov/arcgis/rest/services/nowcoast/forecast\\_meteoceanhydro\\_sfc\\_ndfd\\_time/MapServer](https://nowcoast.noaa.gov/arcgis/rest/services/nowcoast/forecast_meteoceanhydro_sfc_ndfd_time/MapServer)



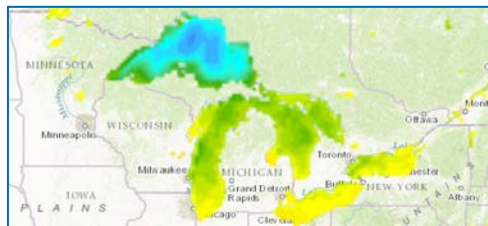
Includes NWS gridded forecasts of sensible surface weather variables or elements such as air temperature, relative humidity, and total sky cover.

*Refresh Time: Every 6 hours*

## Real-time Global and NASA SPoRT Surface Sea Temperature Analyses

### NOAA Daily Sea Surface Temps

[https://nowcoast.noaa.gov/arcgis/rest/services/nowcoast/analysis\\_ocean\\_sfc\\_sst\\_time/MapServer](https://nowcoast.noaa.gov/arcgis/rest/services/nowcoast/analysis_ocean_sfc_sst_time/MapServer)



Depicts the latest daily sea surface temperature analyses from the NOAA/NWS/NCEP operational real-time global SST analysis system and the NASA/SPoRT experimental sea surface temperature composite.

*Refresh Time: Twice daily (NASA), Once daily (NCEP)*

## Potential Storm Surge Flooding

### NOAA Potential Storm Surge

[https://nowcoast.noaa.gov/arcgis/rest/services/nowcoast/wwa\\_meteocean\\_tropicalcyclones\\_inundation/MapServer](https://nowcoast.noaa.gov/arcgis/rest/services/nowcoast/wwa_meteocean_tropicalcyclones_inundation/MapServer)

Updates with the latest official NWS potential storm surge flooding information for any significant landfalling tropical cyclone impacting the U.S. Atlantic and Gulf of Mexico coasts.

*Refresh Time: 5 min*

*Juvare envisions a future in which communities are resilient in the face of danger. With precise, vigilant and connected solutions, Juvare fosters networks of mutual assistance that help organizations bounce forward. For more information, contact Juvare Support at 877-771-0911 or [support@juvare.com](mailto:support@juvare.com).*